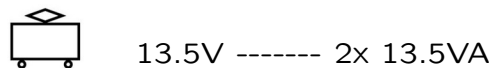


- Technical specifications

Outout voltage: Toy transformer



Electricity modes

- 1.) Operating mode = cars are operated via speed controllers
- 2.) Idle mode / Stand-by mode = speed controllers are not activated, no game
CURRENT CONSUMPTION < 0,5 watt / 0,5w
- 3.) Off-state = power supply unit disconnected from mains supply



This device is marked by “selective sort through” symbol related to sort through domestic, electric and electronic, waste.

This means the product must be treated by a specialized “sorting/collecting” system in accordance with European directive 2002/96/CE, to reduce the impact upon environment.

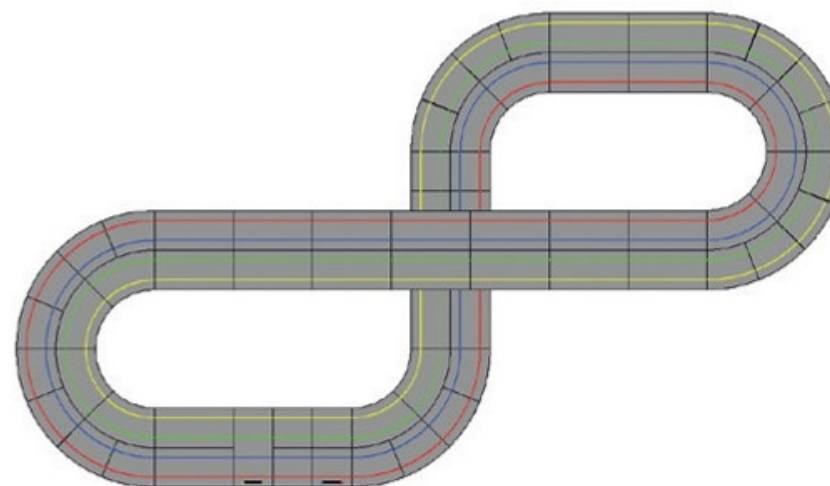
For more precise information, please contact your local administration.

Electronical product which are not going through special collecting, are potentially dangerous for environment and human health, because of dangerous substance.

Galileo Engineering s.r.l.

Via Cavallotti n°16 - Reggio Emilia - 42122 - Italy E-mail: info@slot.it

POLICAR HOME RACERS



T004z

9,2m track 4 lanes starter set

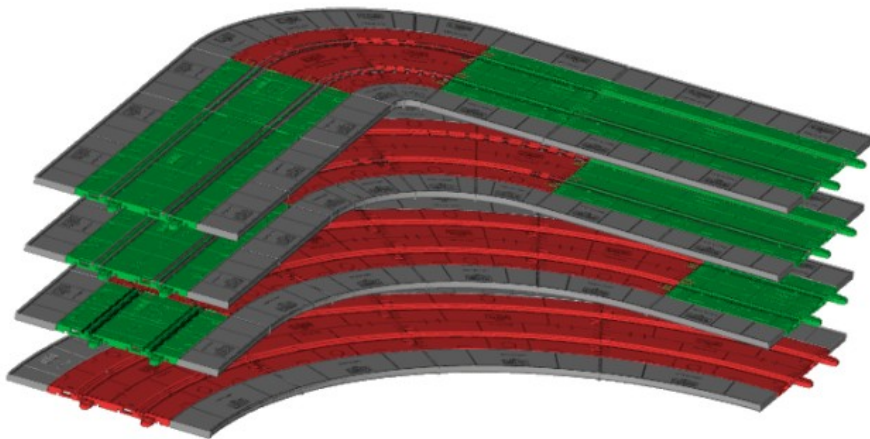
external dimension: 3.8x2.2m

- Special (patent pending) track system geometry!

We sat at the drawing board with the intent to make it easier to create your own circuits and we think we succeeded.

In the new POLICAR track, any constant radius 90° turn can always be replaced with any other constant radius 90° turn: regardless of whether you're using R1, R2, R3, or R4 pieces!

To put it simply: all of the above curve assembly pieces are interchangeable. So, if for example you grow tired of your layout, you can easily replace a 90° R1 turn with a 90° R3 without trouble. Guaranteed by geometry.



- Safety instructions

- **WARNING!** Not for children under 36 months. Danger of suffocation due to small parts which can be swallowed by children.

- **WARNING!** Functional clamping danger.

- **WARNING!** The transformer is not a toy! Do not short-circuit the transformer's connections! Note to parents: Regularly inspect the transformer for damage to the cable, plug or housing! Only operate the toy with recommended transformers! The transformer may no longer be used if it is damaged! Only operate the racetrack with a transformer! If play is interrupted for longer periods, it is recommended to separate the transformer from the power supply. Do not open transformer or speed controller housings!

- **Important note to parents:** Transformers and power supply units are not suitable to be used as toys. The use of such products needs to be constantly supervised by the parents.

- Regularly check the track and cars for damage to cables, plugs and housings! Replace defective parts.

- The car racetrack is not suitable for outdoor operation or operation in wet locations! Keep away from liquids.

- Do not place any metal parts onto the track to avoid short-circuits. Do not place the track in the immediate vicinity of delicate objects, as these could be damaged by cars hurled from the track.

- Pull the plug before cleaning the race track! Only use a damp cloth for cleaning, no solvents or chemicals. When it is not in use, store the track in a dry and dust-protected location, preferably in the original cardboard box.

- Do not operate race track at face-or eye-level – risk of injury due to cars being catapulted off the track.

- Misuse of transformer can cause electrical shock.
- The toy must only be used with a transformer for toys.

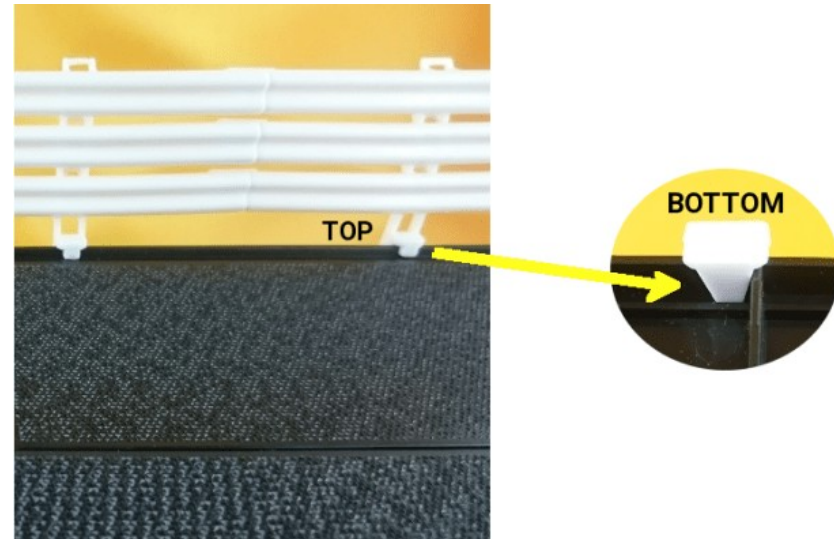
Note: The vehicle may only be operated again in a completely assembled condition. Assembly may only be carried out by an adult.

- Package contents

- a) 24 - full length straight (P008)
- b) 1 - ½ length powerbase (P015)
- c) 1 - ½ length powerbase (P016)
- d) 5 - ½ length straight (P023)
- e) 12 - R2 curve (P014)
- f) 24 - R3 curve (P044)
- g) 40 - ½ length straight border (P002)
- h) 24 - inner border for R2 curve (P052)
- i) 24 - outer border for R3 curve (P056)
- j) 2 - end border left (P059)
- k) 2 - end border right (P060)
- l) 150 - intersection locking clips (P076)
- m) 14 - clip for straights (P074)
- n) 10 - clip for curves (P075)
- o) bridge set (16 feet, 60 barrels, 8 linkages P010)
- p) 2 - barrier set (P073)
- q) 4 - mechanical speed regulator (P028 - P029)
- r) 2 - adjustable power supply (P003)
- s) 1 - instruction manual

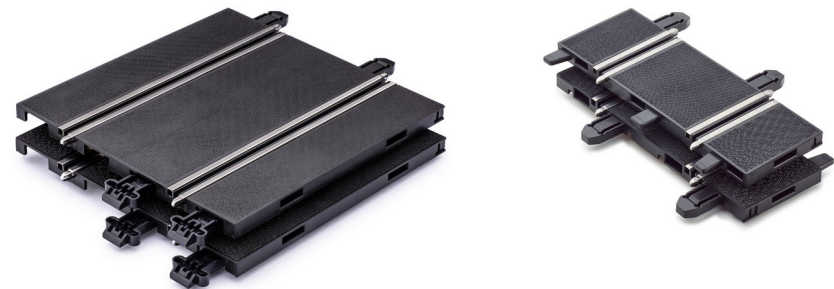
- A guard rail that actually works! (P020-10)

Triple rail guard rail. Stays in place and saves the bacon.



- Compatible with major brands

Compatible (with adapters) with Ninco 1/32 tracks, and with POLISTIL/POLICAR and Fleischmann 1/32 tracks made between 1970 and 2000.



- Adjustable power supply, the best upgrade your money can buy...

... is **INCLUDED** in every **POLICAR** set (this may change depending on your market. Please check locally). The indispensable accessory for children, novices and experts: adjustable on seven positions with plenty (24W) of power.



- Multiple lateral clip system

Keeps aligned and flat that huge multi lane layout that you've been secretly dreaming of!



- Track assembly

Put together the parts of the track only after placing them on a flat surface: lay them on the floor or on a flat table, and press them together.

Attempting to connect them otherwise may lead to breakage of parts or personal damage!



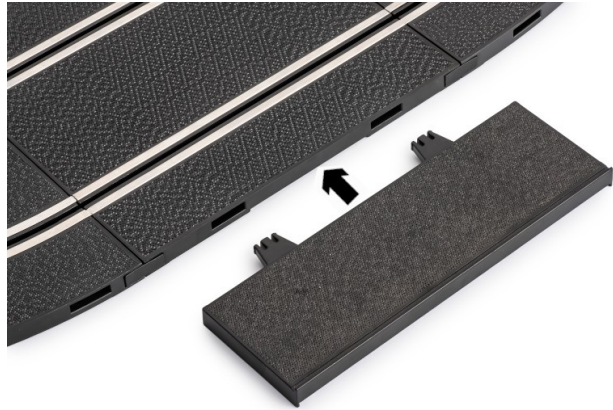
- Intersection locking clips

Use the provided small clips to firmly join the track components. For removal, insert index and middle finger in the inner side of the track, in correspondence to the ends of the clip, and push outwards.



- Borders assembly

On a flat base insert borders in the side holes present in all the rails.



- Bridge assembly

Barrels, feet and shaft are designed with one cylindrical male end to match the cylindrical female that is found in the bottom part of most track pieces. Stack the desired quantity of barrels on the appropriate foot and finish with the blue fixing shaft. Assemble all together in the special joint under the full length straight part. Feet, shafts and barrels can also be used individually.



- Electrical connection

Fully insert the plugs of the two controllers into the sockets marked '1' and '2' of the full length straight (Powerbase). Insert the plug from the power supply (j) into the appropriate socket, marked with 'DC', on the Powerbase. Set the desired voltage using the appropriate key, connect the power supply to the power grid using the appropriate socket. To change power supply voltage it is not necessary to disconnect the power supply from the track: take it out from socket, choose desired voltage, and insert again. This operation is reserved to adults.

WARNING: make sure that the controller's plug is fully inserted in the power base before the track is powered!

The controllers on this track provide an automatic braking effect using a three wires harness. Due to this special arrangement, if the plug of the controller is only partially inserted, the car on the track may start at full speed! Therefore, the controller must be fully plugged in, before the plug from the transformer is plugged into the power base.



I am your manual. Please read me! I was made for that purpose.

Who we are, why we do it, what have you bought

Our company was founded in Reggio Emilia in 1998. We design, manufacture and distribute high performance slot cars and accessories worldwide, for enthusiasts, collectors, racers. We are well known through three popular brand names: **Slot.it**, the worldwide reference for cars and spare parts for racers and collectors, **Policar**, "the" brand of Italian tracks and cars in the 60s and early 70s, and **Politoys**, the brand that, back in the 60s, was synonym with 'Italian die cast'.

We design all our products in Reggio Emilia, in the heart of the Emilian 'Motor Valley', surrounded by the great brands that gave birth to the Italian automotive legend.

This track is a completely new project, into which we've tried to infuse 20 years of specific slot car experience.

In the rest of this manual, and with this product, we hope to convey our passion for the wonderful world of 'slot cars' and explain you our choices.

The Policar track is a complete system; it allows the enthusiast to build tracks up to eight lanes [*], designed to offer many hours of play. We faced this challenge with the goal of providing the best value for money but always keeping eyes on quality rather than on price.

We have also chosen to minimize the use of plastic packaging. All the spare rails, curves, and accessories are packaged with recycled and recyclable carton. We know it's ugly, and it won't catch your eye. However, it is good for the environment into which we all live in.

You can see our creations visiting www.slot.it or www.policar.it .

[*] some pieces of the track will be available in second half of 2019. Further digital and ten-lane extensions are planned.